


BATE COLLECTION FLUTES

1196	Richard Weekes Transverse Flute	Transverse flute of rosewood with eight keys of nickel alloy and nickel alloy ferrules. There are four joints, head joint with a sliding tuner section.	Max L = 675 mm Max W = 33 mm Max Diam [head] = 27 mm
10023	System Flute	Wooden flute in three sections, with nickel alloy keys and nickel alloy ferrules on the joints. Some keys padded with leather, some with cork.	Max L = 665 mm Max W = 45 mm
1067	Rudall Carte Transverse Flute	Transverse flute, 1867 system, made of cocus wood, with metal (silver?) keys. Head and foot are separate, with metal ferrules at the joints. The keys are padded with leather.	Max L = 654 mm Max W = 48 mm
1114	Arsène Zoë Lecomte Transverse Flute	Transverse flute, 5 keys, of black wood, in five sections. The keys are of white metal and are padded with leather. Metal ferrules are at the joints, the top of the head and the bottom of the foot.	Max L = 622 mm Max W = 41 mm
1145	Goodlad Transverse Flute	Transverse flute of boxwood with eight keys, in five joints, with ivory ferrules and ivory cap on the head. The keys are silver.	Max L = 668 mm Max W = 37 mm
1111	George Butler Transverse Flute	Transverse flute of dark wood with ten keys. In three joints. The keys are of nickel alloy. Metal ferrules on the joints. Tuning slide in the head.	Max L = 672 mm Max W = 40 mm
1061	Transverse Flute	Transverse flute of dark wood with ivory head. With eleven keys of nickel alloy, a tuning slide and ferrules at the joints, all of nickel alloy.	Max L = 715 mm Max W = 45 mm
x18	Johann Adolph Neddermann Transverse Flute	Transverse flute of dark wood in four sections. Meant to have nine keys, but incomplete now. Keys and ferrules round the joints of silver. Tuning slide in the head. Two of the key levers have ivory inserts.	Max L = 707 mm Max W = 37 mm
1060	William Henry Potter Transverse Flute	Transverse flute of boxwood in five joints, with ivory ferrules and six keys of pewter.	Max L = 674 mm Max W = 35 mm

1059	Richard (or Ronald) and George Payne Transverse Flute	Transverse flute of cocus wood in five joints, with eight keys, six of silver and two of pewter. With silver ferrules lined with ivory.	Max L = 660 mm Max W = 40 mm
1172	Hérouard Frères Transverse Flute	Transverse flute of boxwood in four joints, with ivory ferrules and one brass key	Max L = 615 mm Max W = 30 mm
1171	Joseph Baumann Transverse Flute	Transverse flute of grenadillo wood in four joints, with horn ferrules and one brass key.	Max L = 603 mm Max W = 30 mm
1170	Gilles Lot Transverse Flute	Transverse flute of wood in four joints, with ivory ferrules and one brass key.	Max L = 603 mm Max W = 30 mm
1173	Jean François Martin Transverse Flute	Transverse flute of wood in four joints, with horn ferrules and one brass key.	Max L = 623 mm Max W = 30 mm
1177	Transverse Flute	Transverse flute of wood with ivory ferrules. With one brass key. With two additional joints with three fingerholes each.	Max L = 625 mm Max W = 35 mm extra joints: 197 mm, 142 mm
102	Transverse Flute	Transverse flute of boxwood in five joints, with horn ferrules and one brass key.	Max L = 610 mm Max W = 30 mm
1178	Transverse Flute Ti-tzu	Ti-tzu, transverse flute of bamboo painted black, with a short ivory tube at either end. It has nine fingerholes and two more holes opposite near the foot. With Chinese inscription.	Max L = 640 mm Max Diam = 23 mm
1179	Transverse Flute Ti-tzu	Ti-tzu, transverse flute of bamboo, with bands of string blackened with laquer, giving a striped appearance. With an ivory ring at one end and an ivory cap at the other.	Max L = 625 mm Max Diam = 26 mm
1180	Transverse Flute Ti-tzu	Ti-tzu, transverse flute of plain bamboo.	Max L = 665 mm Max Diam = 24 mm

10026	Weydemuller Transverse Flute	Transverse flute of wood (possibly boxwood), in four sections with ivory ferrules at the joints. With one brass key.	Max L = 647 mm Max Diam = 34 mm
1115	Joseph Wallis Transverse Flute	Transverse flute of wood, originally with eight keys, now without keys. Metal ferrules between the joints, the ones in the upper part incised with a wavy pattern.	Max L = 667 mm Max W = 35 mm
x108	Rudall Carte Transverse Flute	Transverse flute of cocus wood, Boehm system, with eight nickel alloy keys and nickel alloy rings at both ends and at the joint. In a leather-covered case lined with green velvet.	Max L = 673 mm Max W = 46 mm
10027	Cabart modified Transverse Flute	Flute modified so that a one-handed person can play it. With added levers and wooden handles on some keys.	Max L = 770 mm
1148	Stephen Quilter Transverse Flute	Transverse flute, 1851 system, of cocus wood, in three joints, with nickel alloy keys padded with leather. In leather-covered case lined with blue velvet.	Max L = 655 mm Max W = 50 mm
10017	Transverse Flute	Transverse flute of cocus wood, with eight brass keys and brass ferrules, bottom ferrule missing. Tuning slide in the head.	Max L = 650 mm Max W = 37 mm
10018	Thomas Dawkins & Co. Fife	6-keyed fife (band flute) in Bb of cocus wood, in three sections, with tuning slide. The keys are of brass.	Max L = 390 mm Max Diam [head] = 20 mm
0391	Guido M. Klemisch Transverse Flute	Treble recorder of wood, one head and two bodies, each with seven fingerholes and one thumbhole and slightly flaring bell. A broad brass band at the joint. In a case lined with blue plush textile.	Max L = 428 mm Max L [second body] = 345 mm
1151	W.T. Armstrong Transverse Flute	Transverse flute of silver or silvered metal, Murray system. In a case. The head does not fit the body properly.	Max L [body] = 485 mm Max L [head] = 225 mm
10007	Transverse Flute	Transverse flute of wood, with eight nickel alloy keys, nickel alloy ferrules, tuning slide in the head. Fingerholes bushed with nickel alloy(missing on one). In leather case lined with red textile.	Max L = 656 mm Max W [case] = 290 mm Max L [case] = 125 mm

105	Button & Co Transverse Flute	Transverse flute of boxwood in four joints, with one brass key and brass ferrules. In a case (not original).	Max L = 605 mm Max W = 33 mm
1169	Laurent Transverse Flute	Transverse flute made of glass, in four joints with one extra body joint, with one silver key and silver ferrules. A faceted crystal is set into the head. In a leather covered case padded with a yellow duster.	Max L = 629 mm Max Diam = 29 mm Max L [extra joint] = 209 mm
			
10003	Robert Bigio Transverse Flute	Collection of experimental Boehm-system flute crowns and stoppers in different metals. In a plastic case with separate compartments.	Max L [box] = 303 mm Max W [box] = 237 mm
10000	Transverse Flute	Transverse flute of rosewood, with three joints. With nickel alloy keys padded with leather, late 19th century system. Also with narrow nickel alloy ferrules. In a leather case.	Max L = 665 mm Max W = 45 mm
1124	Transverse Flute	Transverse flute of boxwood with ivory ferrules and a single square brass key.	Max L = 336 mm Max W = 24 mm
1131	Transverse Flute	Transverse flute of grenadillo wood with ivory ferrules and four round brass keys. Foot and body are in a single joint.	Max L = 352 mm Max W = 24 mm
171	Blackman Transverse Flute	Transverse flute of rosewood with nickel alloy ferrules and one nickel alloy key. No separate barrel joint, body and foot joints in one piece.	Max L = 395 mm Max W = 25 mm
1078	Henry Potter Transverse Flute	Transverse flute of rosewood with nickel alloy ferrules and six nickel alloy keys (one now missing). No separate barrel joint, body and foot in one piece.	Max L = 390 mm Max W = 25 mm
1072	J. Wallis & Son Transverse Flute	Transverse flute of cocus wood with six nickel alloy keys and ferrules and nickel alloy lip plate.	Max L = 378 mm Max W = 25 mm
1133	Transverse Flute	Transverse flute of dark wood, with head and barrel joint, foot and body in one piece. With six nickel alloy keys and nickel alloy ferrules.	Max L = 378 mm Max W = 25 mm
1074	Hawkes & Son Transverse Flute	Transverse flute of rosewood, consisting of two pieces. With five nickel alloy keys and nickel alloy ferrules.	Max L = 378 mm Max W = 35 mm
1134	Transverse Flute	Transverse flute of cocus wood with ivory barrel,	Max L = 666 mm

		with eight keys, ferrules and lip plate of nickel alloy. Fingerholes bushed with the same material. In leather covered case lined with blue textile.	Max W = 29 mm
10039	P.R. Marak Transverse Flute	Bamboo flute with six fingerholes, bound with black tape in four places. With carrying sling of leather and metal.	Max L = 396 mm Max Diam = 23 mm
1106	J. Wallis & Son Transverse Flute	Transverse flute of grenadillo wood with keys of nickel alloy. Also with ferrules of nickel alloy, the one round the foot missing.	Max L = 656 mm Max Diam = 30 mm
10048	Transverse Flute	Lower body joint of a flute, of dark wood with nickel alloy keys, four present, one missing.	Max L = 258 mm Max W = 30 mm
10049	Transverse Flute	Transverse flute of wood, the barrel joint leather-covered, with nickel alloy keys, lip plate and ferrule, fingerholes bushed with the same material. Originally with eight keys, three remaining. Ferrules missing on the barrel joint and the foot.	Max L = 667 mm Max W = 33 mm
10050	Transverse Flute	Transverse flute of wood with ivory barrel. Eight keys (one now missing), ferrules and lip plate of nickel alloy, fingerholes bushed with the same material.	Max L = 655 mm Max W = 25 mm
1108	Fife	Transverse flute of wood, with four keys of nickel alloy, ferrules appear to be some of nickel alloy and some of brass.	Max L = 498 mm Max Diam = 27 mm
1045	Transverse Flute	Transverse flute of cocus wood, with eight keys of brass with pewter plugs on two keys. Ferrules are of brass.	Max L = 663 mm Max Diam = 27 mm
1104	Roy Chiverton Transverse Flute	Transverse flute made from a length of grey plastic pipe, with a cork inside. All in one piece, with six fingerholes.	Max L = 633 mm Max Diam = 23 mm
1103	Hernals Transverse Flute	Transverse flute of metal (a copper alloy), Boehm system. The keys are padded with cork and leather. In plastic case lined with blue textile.	Max L = 671 mm Max W = 48 mm
100	Proser Transverse Flute	Transverse flute of boxwood with ivory ferrules and one brass key. In four joints.	Max L = 621 mm Max Diam [head] = 30 mm
1125	Potter Transverse Flute	Transverse flute of boxwood in four joints, with ivory ferrules and one brass key padded with leather.	Max L = 596 mm Max Diam [head] = 27 mm

10055	Premier? Fife	Fife of dark wood with five silver keys and silver ferrules.	Max L = 395 mm Max Diam [head] = 23 mm
1167	Roy Chiverton Transverse Flute	Transverse flute of wood, all in one piece, with six fingerholes.	Max L = 625 mm Max Diam = 26 mm
1166	Roy Chiverton Transverse Flute	Transverse flute of wood, all in one piece, with six fingerholes, slightly flaring foot.	Max L = 639 mm Max Diam = 28 mm
10060	Skylark Transverse Flute	Transverse flute of silvered metal, Boehm system, in three joints. In brown plastic case lined with blue textile.	Max L = 670 mm Max W = 45 mm
x1149	Hammig Transverse Flute	Transverse flute, alto, of silver-plated nickel alloy, with keys in Boehm system. With three joints. Keys are padded with leather and cork. In brown hard case lined with green textile, with outer plastic covering.	Max L = 842 mm Max W = 66 mm
1107	Lewis Jones Transverse Flute	Transverse flute, Renaissance style, a straight wooden tube with six fingerholes.	Max L = 678 mm Max Diam [head] = 25 mm
1	Charles Bizey Transverse Flute	Transverse flute of ivory, with head, upper body, lower body and foot joints with a second upper body joint. With a silver ring at the top of the foot.	Max L = 635 mm Max L [body with keys] = 194
106	Charles Bizey Transverse Flute	Transverse flute of boxwood with ivory ferrules, four joints, with one key of metal (copper alloy) on the foot.	Max L = 643 mm Max Diam [head] = 24 mm
1080	Christophe Delusse Transverse Flute	Transverse flute of rosewood with ivory ferrules, with a silver band on the head and one silver key. In four joints. Ferrule on the end of the foot missing.	Max L = 625 mm Max Diam [head] = 28 mm
1109	Astor & Horwood Transverse Flute	Transverse flute of boxwood with ivory ferrules. With four joints and one silver key on the foot.	Max L = 615 mm Max Diam [head] = 27 mm
1138	Delerable Transverse Flute	Transverse flute of boxwood with one brass key. In four joints.	Max L = 655 mm Max Diam [head] = 27 mm
11	Thomas Cahusac senior Transverse Flute	Transverse flute of boxwood with ivory ferrules and one silver key. In four joints.	Max L = 603 mm Max Diam [head] = 27 mm
12	Thomas Cahusac senior	Transverse flute of ivory with silver ferrules. Originally with one silver key on the foot, now with	Max L = 595 mm Max Diam [head] =

	Transverse Flute	a second silver key on the upper body joint. With letters JM incised in the cap.	28 mm
x10	Transverse Flute	Transverse flute of ivory with silver ferrules. With one silver key. Incised in the cap is 'WM. CLARE 1789'.	Max L = 613 mm Max Diam [head] = 27 mm
1140	Camus Transverse Flute	Transverse flute of ebony with ivory mounts. With one silver key.	Max L = 635 mm Max Diam [head] = 28 mm
103	Transverse Flute	Transverse flute of ivory with one silver key. With four joints.	Max L = 623 mm Max Diam [head] = 28 mm
1037	Transverse Flute	Transverse flute of boxwood stained dark, with ivory mounts and one brass key.	Max L = 607 mm Max Diam [head] = 28 mm
108	Transverse Flute	Transverse flute of boxwood, with ivory ferrules, with one brass key.	Max L = 600 mm Max Diam [head] = 29 mm
107	Transverse Flute	Transverse flute of ivory, with one silver key.	Max L = 604 mm Max Diam [head] = 24 mm
x11	John Just Schuchart Transverse Flute	Transverse flute of boxwood with ivory ferrules, with one silver key.	Max L = 606 mm Max Diam [head] = 29 mm
1066	Proser Transverse Flute	Transverse flute of boxwood with a dark stain, with ivory ferrules and with one brass key.	Max L = 625 mm Max Diam [head] = 28 mm
18	Richard Potter Transverse Flute	Transverse flute of boxwood with ivory ferrules and one silver key. With two extra upper body joints.	Max L = 628 mm Max L [body 5] = 240 mm Max L [body 6] = 197 mm
x12	Martin Transverse Flute	Transverse flute of ivory with one metal key and a metal ferrule on top of the foot. There are extra holes for G#, Bb and C. There is yet another hole which has been blocked with wax.	Max L = 598 mm Max Diam [head] = 27 mm
x1	John Blockley Transverse Flute	Transverse flute of boxwood stained dark, with ivory ferrules and one silver key.	Max L = 604 mm Max Diam [head] = 27 mm
19	Proser	Transverse flute of ivory with one silver key.	Max L = 647 mm

	Transverse Flute		Max Diam [head] = 25 mm
1126	Goulding D'Almaine Potter & Co. Transverse Flute	Transverse flute of boxwood with ivory ferrules and one brass key.	Max L = 596 mm Max Diam [head] = 29 mm
16	Goulding & Co Transverse Flute	Transverse flute of boxwood with a dark stain, with ivory ferrules and one silver key.	Max L = 604 mm Max Diam [head] = 29 mm
1030	Goulding & Co Transverse Flute	Transverse flute of boxwood, with ivory ferrules on top and bottom of the head and one brass key.	Max L = 598 mm Max Diam [head] = 28 mm
1141	Friedrich Gabriel August Kirst Transverse Flute	Transverse flute of boxwood, with ivory ferrules and one silver key. With one extra upper body joint.	Max L = 618 mm Max Diam [head] = 28 mm Max L [body 1] = 218 mm
1139	Thomas Lot Transverse Flute	Transverse flute of boxwood, with ivory ferrules and one silver key. With three extra upper body joints.	Max L [with body 2] = 653 mm Max L [body 0] = 214 mm Max L [body 1] = 248 mm Max L [body 3/4] = 224 mm
x1153	John Just Schuchart Transverse Flute	Transverse flute of ivory, with one silver key.	Max L = 600 mm Max Diam [head] = 25 mm
101	John Just Schuchart Transverse Flute	Transverse flute of ivory, with one silver key incised DCM, and silver ferrule at the top of the foot and bottom of the head. With two extra upper body joints. In a wooden box lined with blue textile, with spaces for three more upper body joints.	Max L [foot+ lower body] = 239 mm Max L [head] = 222 mm Lengths of upper body joints: 232 mm, 218 mm, 200 mm
1004	Potter Transverse Flute	Transverse flute, third flute, of boxwood with ivory ferrules and one metal key (probably a copper alloy).	Max L = 506 mm Max Diam [head] = 25 mm
1143	Goulding Transverse Flute	Transverse flute, third flute, in F, of boxwood with ivory ferrules and one brass key.	Max L = 511 mm Max Diam [head] = 23 mm

1069	Monro & May Transverse Flute	Transverse flute, third flute, in F, of boxwood with one brass key.	Max L = 502 mm Max Diam [head] = 26 mm
1006	Collard & Collard Transverse Flute	Transverse flute, third flute, in F, of boxwood with ivory ferrules and with one brass key. Incised on the key is 'H. Peny (or Teny) G Hasely 1838'.	Max L = 513 mm Max Diam [head] = 25 mm
1000	George Astor Transverse Flute	Transverse flute in F, of boxwood stained dark, with one brass key.	Max L = 517 mm Max Diam [head] = 25 mm
1008	Bernard Transverse Flute	Transverse flute in F, of boxwood with ivory ferrules, with one brass key.	Max L = 532 mm Max Diam [head] = 27 mm
x122	Button & Co. Transverse Flute	Transverse flute, fourth flute, in G, of boxwood, with one brass key.	Max L = 460 mm Max Diam [head] = 24 mm
129	Noblet Transverse Flute	Transverse flute of cocus wood, with copper alloy ferrules and four copper alloy keys on screwed-in pillars.	Max L = 618 mm Max Diam [head] = 27 mm
120	Transverse Flute	Transverse flute of glass, with metal ferrules and four metal keys on pillars. With two upper body joints. With a cork inside the head and a faceted crystal at the top.	Max L = 625 mm Max L [extra body] = 207 mm Max Diam [head] = 26 mm
0107	Goulding & Co. / Bainbridge Transverse Flute	Transverse flute with flageolet head, of ebony with ivory mounts. It is blown through a bone nozzle on the side of the head. With four silver keys, and with five joints.	Max L = 594 mm Max Diam [head] = 40 mm
1064	Goulding & D'Almaine Transverse Flute	Transverse flute of boxwood with ivory ferrules, in four joints, with four brass keys. The top of the foot is bound with string.	Max L = 605 mm Max Diam [head] = 27 mm
114	Pietro Grassi Florio Transverse Flute	Transverse flute of boxwood with ivory ferrules, in five joints, with four silver keys. With tuning slide in the barrel and in the foot.	Max L = 610 mm Max Diam [head] = 28 mm
115	Christopher Gerock Transverse Flute	Transverse flute of boxwood with ivory ferrules, in four joints, with four silver keys.	Max L = 605 mm Max Diam [head] = 27 mm
1031	Cahusac jr. Transverse Flute	Transverse flute of ivory, in four joints, with four silver keys. Possibly originally with two keys, with the F and G# keys added later.	Max L = 603 mm Max Diam [head] = 25 mm
111	Cahusac	Transverse flute of rosewood, with ivory ferrules	Max L = 594 mm

	Transverse Flute	except at the top of the head where there is a copper alloy ferrule. With four copper alloy keys.	Max Diam [head] = 29 mm
144	Bühner & Keller Transverse Flute	Transverse flute of ebony, in four joints, with ivory ferrules and with four silver keys.	Max L = 612 mm Max Diam [head] = 26 mm
109	Bellissent Transverse Flute	Transverse flute of boxwood, in five joints, with ivory ferrules and with four silver keys.	Max L = 622 mm Max Diam [head] = 27 mm
x145	Phillips Transverse Flute	Transverse flute of cocus wood, in five joints, with nickel alloy ferrules (two missing) and four nickel alloy keys.	Max L = 612 mm Max Diam [head] = 26 mm
131	Edward Riley Transverse Flute	Transverse flute of boxwood, in five joints, with ivory ferrules and four silver keys.	Max L = 625 mm Max Diam [head] = 25 mm
138	Wood & Ivy Transverse Flute	Transverse flute of boxwood, in four joints, with ivory ferrules and four silver keys. With interchangeable flute and flageolet heads. The flageolet head is blown through an ivory nozzle on the side.	Max L = 605 mm Max L [flageolet head] = 222 mm
110	Blackman Transverse Flute	Transverse flute of cocus wood, in five joints, with ivory ferrules, and with five nickel alloy keys.	Max L = 605 mm Max Diam [head] = 26 mm
1063	William Henry Potter Transverse Flute	Transverse flute of boxwood, in five joints, with ivory ferrules and five keys of pewter alloy. Cap and two ferrules missing.	Max L = 626 mm Max Diam [head] = 28 mm
118	Friedrich Gabriel August Kirst Transverse Flute	Transverse flute of ebony in four joints, with ivory ferrules and ivory tuning slide in the foot, with seven silver keys. The flute is fitted with a new head, with the original head displayed beside it.	Max L = 632 mm Max Diam [head] = 27 mm Max L [original head] = 235 mm
137	James Wood Transverse Flute	Transverse flute of ebony in four joints. with ivory ferrules with five silver keys.	Max L = 632 mm Max Diam [head] = 26 mm
1091	Laubé Transverse Flute	Transverse flute of nickel alloy with five keys and lip plate of the same material, with head, barrel and single body/foot joint.	Max L = 616 mm Max Diam [foot] = 23 mm
149	Eugène Albert Transverse Flute	Transverse flute of cocus wood, in three joints (head, body and foot), with nickel alloy ferrules and nickel alloy keys, Boehm system.	Max L = 598 mm Max Diam = 27 mm

x101	Jean Louis Tulou Transverse Flute	Transverse flute of cocus wood, in three joints (head, body and foot), with nine copper alloy keys (système perfectionée) and silver ferrules.	Max L = 619 mm Max Diam = 27 mm
116	Clair Godeffroy aîné Transverse Flute	Transverse flute of ebony, in five joints, with five silver keys and with silver ferrules plus one horn ferrule. With tuning slide in the barrel and tuning ring between the body joints.	Max L = 626 mm Max Diam = 26 mm
147	Clair Godeffroy aîné Transverse Flute	Transverse flute of cocus wood, in four joints, with silver ferrules and five silver keys.	Max L = 621 mm Max Diam = 27 mm
113	Thomas Collier Transverse Flute	Transverse flute of boxwood, in four joints, with ivory ferrules and five metal keys (silver?). With two extra upper body joints.	Max L = 630 mm Max L [body 4] = 215 mm Max L [body 5] = 206 mm
1070	Hausa Schmidl Transverse Flute	Transverse flute or pipe of pearwood, all in one piece, with six fingerholes no thumb hole, both ends with a knob.	Max L = 415 mm Max Diam = 26 mm
1137	Joseph Wallis Transverse Flute	Transverse flute of nickel alloy, all in one piece, with four keys.	Max L = 376 mm Max Diam = 15 mm
199	Hawkes & Son Transverse Flute	Transverse flute of nickel alloy, silver plated, with head, barrel and body joints, with keys in Boehm system.	Max L = 384 mm Max Diam = 17 mm
172	Carl Boosé Transverse Flute	Transverse flute of boxwood, in two joints, with brass ferrules and four brass keys.	Max L = 397 mm Max Diam [head] = 23 mm
1146	Bilton Transverse Flute	Transverse flute of boxwood, in three joints, with ivory ferrules and with one brass key.	Max L = 403 mm Max Diam [head] = 22 mm
174	Christopher Gerock Transverse Flute	Transverse flute of boxwood, in three joints, with ivory ferrules and with one silver key.	Max L = 398 mm Max Diam [head] = 21 mm
x117	Joseph Wallis Transverse Flute	Transverse flute of boxwood, in three joints. 1-key flute, but key missing.	Max L = 392 mm Max Diam [head] = 21 mm
173	Collard & Collard Transverse Flute	Transverse flute of boxwood, in two joints, with brass ferrules and one brass key.	Max L = 413 mm Max Diam [head] =

			22 mm
x1087	Transverse Flute	Transverse flute of cocus wood, in two joints, with nickel alloy ferrules and one nickel alloy key.	Max L = 384 mm Max Diam = 17 mm
x106	Martin frères Transverse Flute	Transverse flute of cocus wood, in four joints, with nickel alloy ferrules and ten nickel alloy keys.	Max L = 670 mm Max Diam [head] = 27 mm
x15	Wilhelm Liebel Transverse Flute	Transverse flute of ebony, in five joints, with nickel alloy ferrules and seven nickel alloy keys.	Max L = 674 mm Max Diam [head] = 25 mm
1142	Friedrich Gabriel August Kirst Transverse Flute	Transverse flute of rosewood, in four joints, with ivory ferrules and six silver keys.	Max L = 685 mm Max Diam [head] = 26 mm
117	Monzani/ Henry Hill Transverse Flute	Transverse flute of cocus wood, in four joints, with silver ferrules and eight silver keys.	Max L = 670 mm Max Diam [head] = 26 mm
x14	Louis Drouët Transverse Flute	Transverse flute of ivory, in five joints, with silver ferrules with floral design, and with eight silver keys.	Max L = 677 mm Max Diam [head] = 25 mm
146	Clinton & Co. Transverse Flute	Transverse flute of cocus wood, in five joints, with copper alloy ferrules and eight keys of copper alloy, plus rings with two vents for the left hand.	Max L = 650 mm Max Diam [head] = 25 mm
1130	Thomas Prowse Transverse Flute	Transverse flute of cocus wood, in five joints, with silver ferrules and eight silver keys. With silver lip plate and ivory bushed tone hole. Nicholson improved model.	Max L = 664 mm Max Diam [head] = 28 mm
112	Clementi & Co./ Thomas Prowse Transverse Flute	Transverse flute of cocus wood, in five joints, with silver ferrules and six silver keys. With second head and barrel joints for a different pitch. The head and barrel joints are incised with lines.	Max L = 673 mm Max Diam [head] = 28 mm second head and barrel L = 253 mm
143	Auger Buffet jeune Transverse Flute	Transverse flute of cocus wood, in four joints, with copper alloy ferrules and eight copper alloy keys on pillars.	Max L = 668 mm Max Diam [head] = 25 mm
x13	William Bainbridge Transverse Flute	Transverse flute of cocus wood, in five joints, with ivory ferrules and eight silver keys.	Max L = 659 mm Max Diam [head] = 27 mm
127	Tebaldo Monzani	Transverse flute of ebony, in four joints, with	Max L = 682 mm

	Transverse Flute	fluted silver ferrules and eight silver keys, also with silver lip plate. The head is also fluted.	Max Diam (head) = 27 mm
126	Tebaldo Monzani Transverse Flute	Transverse flute of ebony, in three joints, with silver ferrules with star pattern and eight silver keys.	Max L = 672 mm Max Diam (head) = 27 mm
121	William Milhouse Transverse Flute	Transverse flute of boxwood, in four joints, with C-foot, with ivory ferrules and six silver keys.	Max L = 672 mm Max Diam (head) = 28 mm
122	Tebaldo Monzani Transverse Flute	Transverse flute of ebony, in three joints, with silver ferrules and ten silver keys.	Max L = 675 mm Max Diam (head) = 28 mm
1065	Tebaldo Monzani Transverse Flute	Transverse flute of rosewood, in three joints, with silver ferrules and seven silver keys. Keys are marked with a crown, some hall-marked for 1812.	Max L = 663 mm Max Diam (head) = 29 mm
x16	Tebaldo Monzani Transverse Flute	Transverse flute of boxwood, in four joints, with ivory ferrules and seven silver keys.	Max L = 667 mm Max Diam (head) = 28 mm
x17	Tebaldo Monzani Transverse Flute	Transverse flute of ivory, in three joints, with silver ferrules and eight silver keys. With a second head joint with tuning barrel. The keys are marked with crowns.	Max L = 680 mm Max Diam (head) = 28 mm Head+ Barrel = 215 mm
1027	Jacques Nonon Transverse Flute	Transverse flute of cocus wood, in three joints, with silver ferrules and twelve silver keys, Tulou's système perfectionnée.	Max L = 673 mm Max Diam (head) = 28 mm
1129	Tebaldo Monzani ? Transverse Flute	Transverse flute of ivory, in five joints, with silver ferrules and eight silver keys. The keys have crowns stamped onto them.	Max L = 670 mm Max Diam (head) = 25 mm
1127	Richard Potter Transverse Flute	Transverse flute of ebony, in four joints, with ivory ferrules and six silver keys.	Max L = 670 mm Max Diam (head) = 27 mm
1028	Richard Potter Transverse Flute	Transverse flute of boxwood, in four joints, with ivory ferrules and six silver keys. With two extra upper body joints in different lengths to produce different pitches.	Max L = 663 mm Max L [body 4] = 220 mm Max L [body 5] = 210 mm
1128	William Henry Potter Transverse Flute	Transverse flute of boxwood, in five joints, with ivory ferrules and six silver keys. Fitted with Wheatstone's patent duct mouthpiece, see separate entry 0289.	Max L = 668 mm Max Diam [head] = 25 mm

0289	W. Wheatstone Transverse Flute	Wheatstone's patent duct mouthpiece for playing a transverse flute, a silver clip with an ivory beak on a hinged plate. Attached to flute 1128.	Max L = 60 mm Max L [beak] = 15 mm
148	William Henry Potter Transverse Flute	Transverse flute of ebony, in five joints, with ivory ferrules and seven silver pewter keys.	Max L = 676 mm Max Diam [head] = 27 mm
1038	B. Revest Transverse Flute	Transverse flute of cocus wood, in five joints, with ivory ferrules and eight keys, six silver and two pewter.	Max L = 685 mm Max Diam [head] = 26 mm
142	John Mitchell Rose Transverse Flute	Transverse flute of ebony, in three joints, with silver ferrules and six silver keys.	Max L = 672 mm Max Diam [head] = 27 mm
1025	George Rudall/ John Willis Transverse Flute	Transverse flute of boxwood, in five joints, with silver ferrules and seven silver keys. The tone hole is bushed with horn(?).	Max L = 663 mm Max Diam [head] = 26 mm
132	Rudall & Rose Transverse Flute	Transverse flute of boxwood, in five joints, with silver ferrules and eight silver keys. With a second head and barrel joint, with metal cap.	Max L = 635 mm Max L [second head] = 237 mm
x100	Rudall & Rose Transverse Flute	Transverse flute of boxwood, in five joints, with silver ferrules and eight silver keys plus brille. Two rings and vent possibly added later.	Max L = 635 mm Max Diam [head] = 26 mm
1007	Goodlad Transverse Flute	Transverse flute in F of boxwood, in five joints, with ivory ferrules and eight brass keys. Cap missing.	Max L = 545 mm Max Diam [head] = 25 mm
1009	Thomas Key Transverse Flute	Transverse flute in F of cocus wood, five joints, with bone (?) ferrules (brass on head) and seven silver keys. With brass lip plate.	Max L = 570 mm Max Diam [head] = 25 mm
1002	Goulding, Wood & Co. Transverse Flute	Transverse flute, third flute, of boxwood, in five joints, with ivory ferrules, originally with four keys, now all missing.	Max L = 505 mm Max Diam [head] = 25 mm
1144	Goulding & Co. Transverse Flute	Transverse flute, third flute, of boxwood, in three joints, with ivory ferrules and four brass keys.	Max L = 511 mm Max Diam [head] = 25 mm
1001	Richard John Bilton Transverse Flute	Transverse flute in F, of boxwood, in four joints, with ivory ferrules and four brass keys.	Max L = 511 mm Max Diam [head] = 25 mm
1084	Transverse Flute	Transverse flute in F, of cocus wood, in four joints, with nickel alloy ferrules and six nickel alloy keys.	Max L = 498 mm Max Diam [head] = 25 mm

1005	Transverse Flute	Transverse flute in F, of grenadillo wood, in five joints, with nickel alloy ferrules and six nickel alloy keys.	Max L = 510 mm Max Diam [head] = 25 mm
162	Abel Siccama Transverse Flute	Transverse flute, diatonic flute with third order lever keys for the ring finger of each hand. Made of cocus wood with head, barrel, body and foot joints, with eight silver keys and silver ferrules.	Max L = 645 mm Max Diam [head] = 27 mm
1088	Samuel Arthur Chappell Transverse Flute	Transverse flute, Siccama system diatonic flute, of cocus wood with head, barrel, body and foot joints, with eight nickel alloy keys and nickel alloy ferrules.	Max L = 640 mm Max Diam [head] = 27 mm
1026	Johann Heinrich Gottlieb Streitwolf Transverse Flute	Transverse flute, with head, upper and lower body and foot joints, of boxwood with ivory ferrules and seven brass keys.	Max L = 670 mm Max Diam [head] = 27 mm
1058	Jérôme Thibouville-Lamy Transverse Flute	Transverse flute, in five joints, of cocus wood with eight silver keys and silver ferrules. Lined head and barrel.	Max L = 670 mm Max Diam [head] = 27 mm
1071	James Wood & Son Transverse Flute	Transverse flute, in four joints (no barrel), of ebony, with ivory ferrules and seven keys, five silver and two pewter. With two additional upper body joints, which have three keys each.	Max L = 667 mm Max Diam [head] = 29 mm L of add. joints: 210 mm, 203 mm
136	James Wood Transverse Flute	Transverse flute, in five joints, of cocus wood with eight silver keys and ornamental silver ferrules with scroll and floral patterns.	Max L = 656 mm Max Diam [head] = 30 mm
139	Transverse Flute	Transverse flute, in five joints, of cocus wood with eight silver keys and silver ferrules and lip plate. Built for a left-handed player.	Max L = 657 mm Max Diam [head] = 26 mm
x104	Transverse Flute	Transverse flute, in five joints, of grenadillo wood with eight nickel alloy keys and nickel alloy ferrules. The head is of ivory. With matching piccolo (see x115).	Max L = 685 mm Max Diam [head] = 28 mm
135	Johann Heinrich Gottlieb Streitwolf Transverse Flute	Transverse flute, with head, upper and lower body and foot joints, of ebony with ivory ferrules, with eight silver keys with Tromlitz levers to F, Bb and C keys.	Max L = 709 mm Max Diam [head] = 27 mm
165	Transverse Flute	Transverse flute of metal, with head, barrel, body	Max L = 648 mm

		and foot joints, with eight keys (one now missing). With a raised lip plate.	Max W = 45 mm
x1092	Transverse Flute	Transverse flute of metal, with head, barrel, body and foot joints, with eleven keys and a raised lip plate.	Max L = 650 mm Max W = 45 mm
1062	V. Kohler's Söhne Transverse Flute	Transverse flute of wood painted black, in four joints (no separate foot joint), with twelve keys of nickel alloy and nickel alloy ferrules.	Max L = 705 mm Max Diam [head] = 30 mm
134	Carl August Schaufler Transverse Flute	Transverse flute of ebony, in four joints (no separate foot joint), with eleven silver keys.	Max L = 700 mm Max Diam [head] = 30 mm
1136	Niels Thorsen Transverse Flute	Transverse flute of ebony, in five joints, with eleven silver keys and silver ferrules.	Max L = 695 mm Max Diam [head] = 27 mm
154	Transverse Flute	Transverse flute, Boehm system, of cocus wood, in three joints (head, body, foot), with silver keys and ferrules. With a small lip plate with a slight indentation next to the tone hole.	Max L = 665 mm Max Diam [head] = 28 mm
153	John Clinton Transverse Flute	Transverse flute, Clinton's Equisonant, in four joints (head, barrel, body, foot), of cocus with silver keys and ferrules.	Max L = 660 mm Max Diam [head] = 28 mm
152	John Clinton/ John Simpson Transverse Flute	Transverse flute, Clinton's Equisonant, in four joints (head, barrel, body, foot), of cocus with silver keys and ferrules.	Max L = 647 mm Max Diam [head] = 28 mm
151	William Card Transverse Flute	Transverse flute, Card system, entirely of metal (silver or silver plated), with ornamental bands of leafy scrolls.	Max L = 654 mm Max Diam [head] = 27 mm
166	Theobald Boehm Transverse Flute	Transverse flute, Boehm system, of boxwood, with head, barrel, body and foot joints, with keys and ferrules of silver.	Max L = 672 mm Max Diam [head] = 27 mm
x19	Agostino Rampone Transverse Flute	Transverse flute, entirely of nickel alloy, double tube, in three joints. With 15 keys. The head is incised with trumpet-playing angels, flowers and leaves.	Max L = 795 mm Max Diam [head] = 28 mm
x105	Ubaldo Luvoni Transverse Flute	Transverse flute, in four joints (no separate foot joint), of boxwood, with 13 metal keys and metal ferrules.	Max L = 798 mm Max Diam [head] = 28 mm

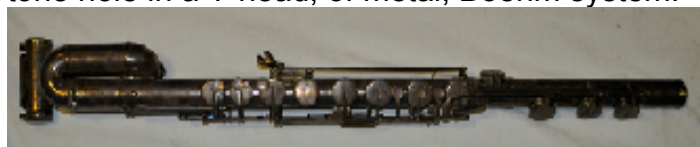
119	Stephan Koch Transverse Flute	Transverse flute, in four joints (no separate foot joint), of rosewood, with 11 silver keys and silver ferrules. The ferrules have a floral pattern, and the keys are shaped like shells.	Max L = 792 mm Max Diam [head] = 28 mm
0293	W. Wheatstone Transverse Flute	Wheatstone's patent duct mouthpiece for playing a transverse flute, a silver clip with an ivory beak. A fragment of leather lining is still attached.	Max L = 47 mm Max L [beak] = 15 mm
155	Clair Godefroy Transverse Flute	Transverse flute, Boehm system, with three joints (head, body, foot), of cocus wood with silver keys and ferrules.	Max L = 660 mm Max Diam [head] = 26 mm
170	Rudall & Rose Transverse Flute	Transverse flute, Boehm system, with four joints (head, barrel, body, foot), of cocus wood with metal keys and ferrules. The tone hole is bushed with ivory.	Max L = 665 mm Max Diam [head] = 26 mm
159	Rudall Rose & Carte Transverse Flute	Transverse flute, Carte's 1851 system, with four joints (head, barrel, body, foot), of cocus wood with silver keys and ferrules.	Max L = 661 mm Max Diam [head] = 26 mm
x112	Charles-Joseph Sax Transverse Flute	Transverse flute, Boehm system, with three joints (head, body, foot), of cocus wood, with silver keys and ferrules.	Max L = 690 mm Max Diam [head] = 29 mm
163	Cornelius Ward Transverse Flute	Transverse flute, Ward's first system, with three joints (head, barrel, body), of cocus wood, with silver keys and ferrules, and with patent tuning adjustment at the top of the head.	Max L = 667 mm Max Diam [head] = 27 mm
168	Cornelius Ward Transverse Flute	Transverse flute, Ward's first system, with three joints (head, barrel, body), of cocus wood, with silver keys and ferrules, and with patent tuning adjustment at the top of the head.	Max L = 660 mm Max Diam [head] = 27 mm
1023	Cornelius Ward Transverse Flute	Transverse flute, Boehm system, with three joints (head, body, foot), of cocus wood with silver keys and ferrules.	Max L = 654 mm Max Diam [head] = 27 mm
164	H. Whitaker/ Rudall & Rose Transverse Flute	Transverse flute, Card's system, with four joints (head, barrel, body, foot), of cocus wood with silver keys and ferrules.	Max L = 650 mm Max Diam [head] = 28 mm
1102	Carl Kruspe Transverse Flute	Transverse flute, Schwedler & Kruspe reform flute, with three joints (head, body, foot), of grenadillo wood, with nickel alloy keys and ferrules. With small 'bumps' on either side of the tone hole.	Max L = 730 mm Max Diam [head] = 28 mm


168a	Cornelius Ward Transverse Flute	Body of a transverse flute, Ward's first system, of cocus wood with silver keys. In a case lined with black textile.	Max L = 449 mm Max Diam = 29 mm
x110	Boosey & Sons Transverse Flute	Transverse flute, Pratten's Perfected system, with four joints, of cocus wood, with keys and ferrules of nickel alloy. In a wooden box lined with blue textile, with certificate in the lid.	Max L = 665 mm Max Diam [head] = 28 mm
x118	Joseph Wallis Transverse Flute	Fife in C of boxwood, with three joints, originally with one key which is now missing.	Max L = 346 mm Max W = 25 mm
1075	Thomas Percival Transverse Flute	Fife in C of boxwood, with three joints, with one key of brass.	Max L = 355 mm Max W = 25 mm
180	Metzler Fife	Fife in C of maple, in one piece, no keys, bound with brass at both ends. Bent into a banana shape.	Max L = 368 mm Max Diam = 26 mm
183	Henry Potter Transverse Flute	Transverse flute in C of boxwood, with two joints, with ivory ferrules and four keys of brass.	Max L = 355 mm Max Diam = 25 mm
1076	H. Whitaker Transverse Flute	Transverse flute in Eb of cocus wood with three joints (head, barrel and body), with six nickel alloy keys and nickel alloy ferrules.	Max L = 302 mm Max Diam = 18 mm
x120a	Transverse Flute	Transverse flute in Eb of ebony, six key system with all covered holes, with two joints, with nickel alloy keys and nickel alloy ferrules.	Max L = 300 mm Max Diam = 20 mm
x120b	Transverse Flute	Transverse flute in Eb of cocus wood, Boehm system, with two joints, with nickel alloy keys and nickel alloy ferrules.	Max L = 305 mm Max Diam = 20 mm
1073	Joseph Wallis Transverse Flute	Transverse flute in Eb of cocus wood, in three joints (head, barrel, body), with six brass keys (one now missing) and brass ferrules.	Max L = 305 mm Max Diam = 20 mm
1195	P. Gautié/ Gautier Transverse Flute	Transverse flute in Eb of grenadillo wood, all in one piece, with one nickel alloy key and nickel alloy ferrules. With a thumb hole for the upper C and two large holes at the end, one of them all the way through.	Max L = 356 mm Max Diam = 20 mm
185	Jean Louis Tulou Transverse Flute	Transverse flute in Eb of cocus wood, with two joints, originally with four keys of silver but with added C key of nickel alloy. Ferrules of silver.	Max L = 310 mm Max Diam = 20 mm

1086	Transverse Flute	Transverse flute in Eb of cocus wood, with two joints, with one key of brass or copper and ferrule of the same metal.	Max L = 302 mm Max Diam = 26 mm
191	Piccolo	Transverse flute in Eb of cocus wood, with three joints (head, barrel, body), with four keys of nickel alloy and nickel alloy ferrules.	Max L = 257 mm Max Diam = 20 mm
158	Rudall, Rose & Co. Transverse Flute	Transverse flute, Boehm system, silver, with three joints.	Max L = 652 mm Max W = 40 mm
157	Rudall & Rose Transverse Flute	Transverse flute, Boehm system, brass with wooden mouthpiece.	Max L = 667 mm Max W = 30 mm
169	T.W. Moore Transverse Flute	Transverse flute and piccolo combined, of cocus with keys and mechanism of copper alloy.	Max L = 786 mm Max W = 50 mm
156	J.R. Lafleur Transverse Flute	Transverse flute of cocus, with three joints, with silver keys and ferrules, with a wide band of silver [?] on the the body. Basically an 8-key flute but with plates throughout.	Max L = 662 mm Max W = 45 mm
x127	Boosey & Co. Transverse Flute	Transverse flute of cocus wood, Pratten system, with three joints, with silver keys and ferrules.	Max L = 675 mm Max W = 47 mm
x129	Boehm & Mendler Transverse Flute	Transverse flute of cocus wood, Boehm system, with three joints, with keys and ferrules of silver.	Max L = 665 mm Max W = 45 mm
150	Theobald Boehm Transverse Flute	Transverse flute, 1847 Boehm system, silver with gold lip plate.	Max L = 624 mm Max W = 37 mm
1032	F. Barbier/ Louis Lot Transverse Flute	Transverse flute, Boehm system, silver, body with square section, with later normal head.	Max L = 705 mm Max W = 50 mm
x111	Rudall, Rose, Carte & Co. Transverse Flute	Transverse flute, 1851 system Rockstro model, silver.	Max L = 652 mm Max W = 50 mm
1135	Rudall, Rose & Carte Transverse Flute	Transverse flute, Barbiton, James Mathews' first version, silver with ivory mouthpiece.	Max L = 640 mm Max W = 45 mm
1039	Rudall, Rose, Carte & Co. Transverse Flute	Transverse flute, Chrysostom, James Mathews' system, gold with silver mounts and ivory mouthpiece. Head and barrel are incised with floral designs.	Max L = 600 mm Max W = 47 mm

1105	James Mathews Transverse Flute	Transverse flute, Chrysostonides, James Mathews' system, silver with ivory mouthpiece.	Max L = 627 mm Max W = 47 mm
x128	Rudall, Carte & Co. Transverse Flute	Transverse flute, Boehm system, Rockstro's model, of cocus with silver keys, ferrules and lip plate.	Max L = 650 mm Max W = 45 mm
x1055	Rudall, Carte & Co. Transverse Flute	Transverse flute, 1867 system, Carte's and Boehm system combined, of cocus with silver keys, ferrules and lip plate.	Max L = 650 mm Max W = 45 mm
160	Rudall, Carte & Co. Transverse Flute	Transverse flute, 1867 system, Carte and Boehm system combined, silver.	Max L = 635 mm Max W = 50 mm
1123	Rudall, Rose, Carte & Co. Transverse Flute	Transverse flute, 1867 system, Rockstro's model, silver.	Max L = 640 mm Max W = 45 mm
x107	Rudall, Carte & Co. Transverse Flute	Transverse flute, Radcliff system, of cocus wood with silver keys and ferrules, with three joints.	Max L = 625 mm Max W = 50 mm
x109	Rudall, Carte & Co. Transverse Flute	Transverse flute, Martin system, silver.	Max L = 625 mm Max W = 62 mm
1046	Rudall, Carte & Co. Transverse Flute	Transverse flute, Boehm system, of cocus wood, with silver keys and aluminium lip plate. With a second thinner head of cocus wood with home-made metal lip plate.	Max L = 650 mm Max L second head = 228 mm
1110	Rudall, Carte & Co. Transverse Flute	Transverse flute, Boehm system, of ebonite, with silver foot joint and silver keys.	Max L = 732 mm Max W = 50 mm
1090	Eugene Albert Transverse Flute	Transverse flute, Boehm system, silver.	Max L = 722 mm Max W = 55 mm
10164	Murray or Lorello? Transverse Flute	Transverse flute, Alexander Murray system, silver.	Max L = 662 mm Max W = 50 mm
161	Rudall, Carte & Co. Transverse Flute Part	Body and foot for a transverse flute, Boehm system, of cocus wood, drilled for keys and mechanism, which have not been fitted. With silver ferrule on the foot and silver band on body tenon.	Max L = 449 mm Max Diam = 28 mm


179	Key Piccolo	Piccolo or flute in Gb, with two joints, of boxwood, no keys.	Max L = 245 mm Max W = 26 mm
1079	Piccolo	Piccolo or flute in Gb, with two joints, of cocus wood, no keys.	Max L = 238 mm Max W = 26 mm
189	Piccolo	Piccolo or flute in F, with three joints (head, barrel, body), of wood (rosewood?), with six keys of nickel alloy and nickel alloy ferrules.	Max L = 267 mm Max W = 28 mm
182	Henry Potter Piccolo	Piccolo or flute in F, with two joints, of cocus wood, with five keys of nickel alloy and nickel alloy ferrules.	Max L = 265 mm Max W = 27 mm
1077	Henry Potter Piccolo	Piccolo or flute in F, with two joints, of cocus wood, with five keys of nickel alloy and nickel alloy ferrules.	Max L = 263 mm Max W = 27 mm
186	Joseph Wallis & Son Piccolo	Piccolo or flute in F, with two joints, of cocus wood, with four keys of nickel alloy and nickel alloy ferrules.	Max L = 265 mm Max W = 25 mm
172a	Boosey & Sons Piccolo	Piccolo or flute in F, with two joints, of boxwood, with five keys of brass and brass ferrules.	Max L = 260 mm Max W = 27 mm
181	John Parker Piccolo	Piccolo or flute in F, with three joints [head, upper body, lower body], of boxwood, with one key of brass.	Max L = 276 mm Max W = 20 mm
190	Transverse Flute	Piccolo or flute in E, with two joints, of wood (grenadillo?), with six keys of silver and ivory ferrules, also with a silver ferrule at the top of the body and a silver lip plate.	Max L = 297 mm Max W = 26 mm
1012	Rudall, Carte & Co. Transverse Flute	Bass flute in F, Boehm system, of metal.	Max L = 837 mm Max W = 75 mm
1022	Abelardo Albisi Transverse Flute	Bass flute in C, Albisiphone, held upright with the tone hole in a T-head, of metal, Boehm system.	Max L = 965 mm Max W = 104 mm



1018	Burghley Transverse Flute	Alto flute in G, of mahogany, with four joints. one joint is forked and the head is attached to it so it is at an angle to the flute. With six keys of wood painted black and ivory.	Max L = 915 mm Max W = 215 mm
			
1017	Burghley Transverse Flute	Flute of mahogany, with angled head joint made in segments to allow various adjustments. With two keys of black wood (one broken off). With ivory ferrules on the foot.	Max L = 560 mm Max Diam = 37 mm
1016	Burghley Transverse Flute	Flute of mahogany, with angled head joint, with one key of black wood and ivory, with one fingerhole bushed with ivory, and with ivory ferrules.	Max L = 600 mm Max Diam = 37 mm
1036	Rudall & Rose Transverse Flute	Bass flute in Bb of cocus, in five joints, with eight keys of silver and silver ferrules. With C foot.	Max L = 837 mm Max Diam [head] = 30 mm
x124	Rudall, Carte & Co. Transverse Flute	Bass flute in Bb of cocus, with head joint of metal (nickel alloy) with mouthpiece of wood painted black. With keys of nickel alloy, 6 key system with plates	Max L = 690 mm Max Diam [body] = 26 mm
1020	Joseph Wallis & Son Transverse Flute	Flute of ebonite, no keys, blown like a transverse flute but held vertically, Giorgi system. With metal ferrules.	Max L = 522 mm Max W = 35 mm
1021	Joseph Wallis & Son Transverse Flute	Flute of ebonite, blown like a transverse flute but held vertically, Giorgi system. With one copper alloy key and copper alloy ferrule at the bottom.	Max L = 522 mm Max W = 35 mm
1068	Joseph Wallis & Son Transverse Flute	Flute of ebonite, blown like a transverse flute but held vertically, Giorgi system. With three nickel alloy keys and ferrules of nickel alloy.	Max L = 522 mm Max W = 35 mm
1019	H. Schaffner (possibly Giorgi & Schaffner) Transverse Flute	Flute of nickel alloy, blown like a transverse flute but held vertically, Giorgi system. With large rectangular holes and rectangular plates operated with a system of metal tracks, Schaffner system.	Max L = 591 mm Max W = 35 mm

1011	Georg Heinrich Scherer Transverse Flute	Flute d'amour of ivory, with four joints, with one silver key.	Max L = 770 mm Max Diam [head] = 27 mm
1015	Thomas Stanesby jr. Transverse Flute	Flute d'amour of boxwood, in four joints, with ivory ferrules, and with one silver key.	Max L = 755 mm Max Diam [head] = 35 mm
1010	Clementi & Co Transverse Flute	Flute d'amour of boxwood, in four joints, with one brass key.	Max L = 767 mm Max Diam [head] = 31 mm
1013	Transverse Flute	Flute d'amour of boxwood, in four joints, brass ferrules and five brass keys (originally only one, the others added later).	Max L = 743 mm Max Diam [head] = 30 mm
1181	Rudall, Carte & Co. Transverse Flute	Transverse flute, metal. With modifications by previous owner who had lost the right index finger.	Max L = 692 mm Max W = 160 mm
1168	Aulos Transverse Flute	Transverse flute, of white plastic, in four joints, with one metal key and metal ferrules. In its own leather case (probably synthetic leather) with outer textile covering. Plastic copy of an ivory flute by Stanesby junior.	Max L = 610 mm Max W = 33 mm
1093	Ti-tzu Transverse Flute	Transverse flute of bamboo, with stripes created by binding with thread and painting the thread brown, both ends painted black, with brass ferrule in the centre. Six fingerholes, membrane hole, two tassel holes and two vents.	Max L = 638 mm Max Diam = 26 mm
x1053	Transverse Flute	Transverse flute of reed, stopped with cork, with seven fingerholes burnt in.	Max L = 391 mm Max Diam = 21 mm
1049	Transverse Flute, Shinobue	Transverse flute of bamboo with brown lacquer stopper, laquered red inside, with seven fingerholes. In purple cloth case.	Max L = 460 mm Max Diam = 20 mm
1041	Ti-tzu Transverse Flute	Transverse flute of bamboo stained brown, with bone foot (bone head missing), six fingerholes, membrane hole with membrane, two tassel holes, two vents. Incised decoration of flowers and birds.	Max L = 642 mm Max Diam = 25 mm
1042	Ti-tzu Transverse Flute	Transverse flute of bamboo stained brown, with bone foot (bone head missing), six fingerholes, membrane hole with membrane, two tassel holes, two vents. With Chinese inscription.	Max L = 642 mm Max Diam = 25 mm

10150	Transverse Flute	Transverse flute of white wood, painted green, with incised decoration showing through in white, of lines, stars and acorns or nuts. With six fingerholes.	Max L = 360 mm Max Diam = 20 mm
0345	Transverse Flute	Bamboo notched flute with six fingerholes (a seventh fingerhole has been covered up with tape). With a red ring painted round one end.	Max L = 387 mm Max Diam = 22 mm
0337	Transverse Flute	Flute of bamboo, with seven fingerholes and one thumbhole. With a brown geometric pattern.	Max L = 345 mm Max Diam = 18 mm
1162	Ti-tzu Transverse Flute	Bamboo flute, ti-tzu, in the paper packaging in which it was purchased from the Ray Man shop.	Max L = 452 mm Max W = 30 mm
0340	Transverse Flute	Notch flute of bamboo, with six fingerholes and thumbhole, in a blue felt case stitched with yellow and orange yarn.	Max L = 338 mm Max Diam = 17 mm
1160	Transverse Flute	Transverse flute, simple system, of wood with nickel alloy head, nickel alloy keys and ferrules.	Max L = 725 mm Max W = 35 mm
1161	Transverse Flute	Transverse flute of bamboo, with finger holes on either side of the embouchure.	Max L = 460 mm Max Diam = 18 mm
0323	Transverse Flute	End-blown flute, a length of reed closed at one end, no fingerholes.	Max L = 283 mm Max Diam = 18 mm
4124	Transverse Flute	Flute of bamboo with six fingerholes.	Max L = 294 mm Max Diam = 20 mm
0338	Transverse Flute	Wooden flute with six fingerholes and a thumbhole, decorated with figures of a man and a woman.	Max L = 345 mm Max Diam = 32 mm
1165	Transverse Flute	Transverse flute in Bb, in two joints, of reddish-brown wood, with brass ferrules and one nickel alloy key.	Max L = 375 mm Max W = 30 mm
1164	Transverse Flute	Transverse flute of cocus wood, in five joints, with eight nickel alloy keys and nickel alloy ferrules.	Max L = 652 mm Max W = 34 mm
1156	Flute Part	Upper body joint of a transverse flute, boxwood, with two silver keys.	Max L = 211 mm Max Diam = 30 mm
x1152	Potter Transverse Flute	Transverse flute of boxwood in four joints, with ivory ferrules and four silver keys.	Max L = 615 mm Max Diam [head] = 26 mm

14	Drouet Transverse Flute	Transverse flute of boxwood stained dark, in four joints, with ivory ferrules and one silver key. In wooden box lined with green felt.	Max L = 605 mm Max Diam [head] = 31 mm
1101	Albert Cooper Transverse Flute	Transverse flute, silver, Murray system, with extension foot, with head of dark wood (ebony?), Fajardo 'wedge head'.	Max L = 702 mm Max W = 45 mm
1197	Rudall & Rose Transverse Flute	Transverse flute of boxwood, in five joints, with ivory ferrules and one silver key.	Max L = 617 mm Max W = 34 mm
10171	Band Flute	Band flute of cocus wood, with brass ferrules and one brass key.	Max L = 379 mm Max Diam = 30 mm
1174	Herouard Freres Walking Stick Flute	Walking stick flute, of wood shaped to look like bamboo, in three joints with brass ferrules, with six fingerholes plus one hole with a key. The head has a horn cap with an inlaid mother-of-pearl shield.	Max L = 855 mm Max Diam = 37 mm
			
10174	Joseph Wallis & Son Band Flute	Band flute of cocus wood with nickel alloy ferrules and one nickel alloy key.	Max L = 375 mm Max W = 27 mm
10175	Archibald Campbell Band Flute	Band flute of cocus wood with nickel alloy ferrules and originally with one key, now missing.	Max L = 380 mm Max W = 27 mm
10176	Rudall Carte & Co. Transverse Flute	Transverse flute of cocus wood with nickel alloy keys (system), in three joints. In original box lined with green textile.	Max L = 673 mm Max W = 50 mm
10177	Rudall Carte & Co. Transverse Flute	Transverse flute of cocus wood with nickel alloy keys (system), in three joints. In original box lined with green textile.	Max L = 673 mm Max W = 50 mm
10179	Boucet Transverse Flute	Transverse flute, silver plated, system flute, in plastic box lined with purple textile.	Max L = 673 mm Max W = 50 mm
1175	Bellissent Transverse Flute	Transverse flute of rosewood, with ivory ferrules and four silver keys. With two extra upper body joints. In a wooden box lined with red textile.	Max L [with body 2] = 626 mm Max L [body 1] = 225 mm Max L

1176	Bühner & Keller Transverse Flute	Transverse flute of grenadillo wood, with silver ferrules and one silver key, ivory cap and ivory embouchure. With two extra upper body joints. In a wooden box lined with black textile.	[body 3] = 210 mm Max L [with body 1] = 630 mm Max L [body 2] = 216 mm Max L [body 3] = 208 mm
15	Peter Apelberg Transverse Flute	Transverse flute of boxwood with one key.	Max L = 620 mm
10199	Flute	Bamboo flute also known as a Fi Flute	total: 639mm
10209	Rudall Carte Transverse Flute	Transverse flute of rosewood with (Boehm system) keys of nickel alloy and nickel alloy ferrules. There are three joints, main body and foot joint. Complete with case	Length - 655mm
10218	Clementi & Co Transverse Flute	Transverse flute of ivory with eight keys of silver (one missing). There are four joints, head joint with a nickel alloy sliding tuner section.	Max L = 683 mm Max W = 33 mm Max Diam [head] = 27 mm
10214	James Wood & Son Transverse Flute	Transverse flute, third flute, in F, of boxwood with ivory ferrules and one brass key.	Max L = 494 mm Max Diam [head] = 30 mm