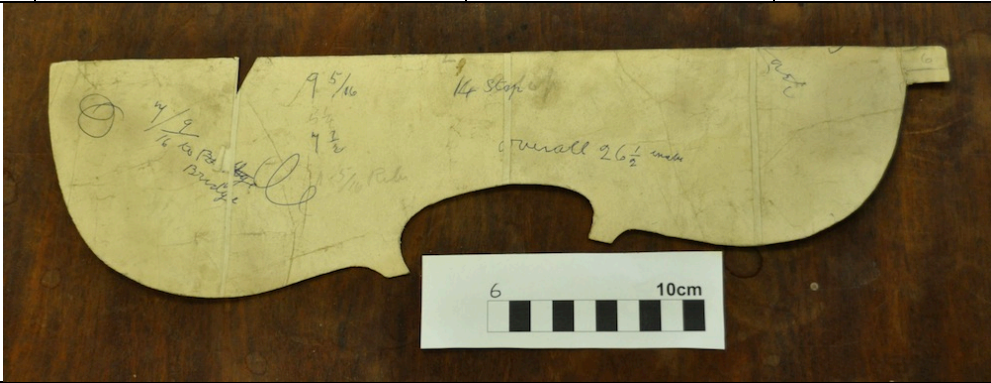

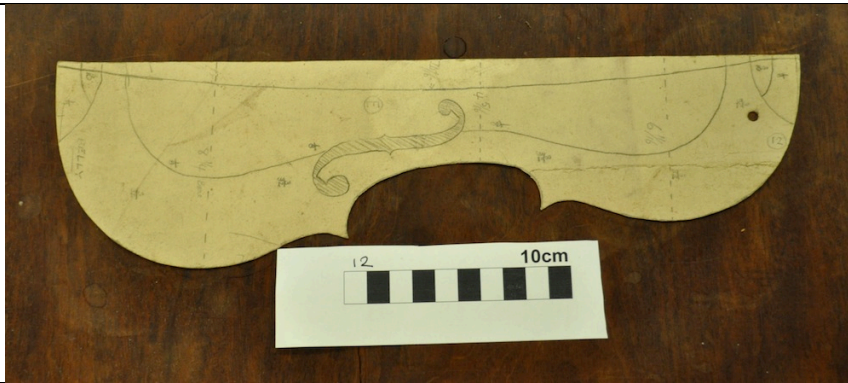


CHANOT FAMILY VIOLIN MAKING TOOLS

PAPER/CARD TEMPLATES

UIN	Description	General Dimensions	Other notes
10235 (1)	A&H Amati violin template (Card) – complete outline, good condition	400mm x 160mm	Half body with neck. Annotations: Lower:- 8 1/4 ; Upper: 6 1/2 3/16
10236 (2)	Stradivarius viola template (Card) – complete outline	440mm x 130mm	Half body – ragged edges. Annotations: 16 1/4 x 9 1/2 x 7 1/2; Reduced 1/8 from Strad copy
10237 (3)	'Cello template (Brown paper) – complete, badly folded, dirty and creased.	740mm x 310mm	Half body – old brown wrapping paper. Annotations: “Mrs Ruskers - cello – Old.....”
10238 (4)	'Cello template (Paper) – very badly damaged	850mm x 280mm	Half body. Annotations: “Fivery cello”
10239 (5)	Stradivarius violin template (Card) – complete outline, good condition	3800mm x 120mm	Half body with neck. Annotations: Lower: 8 1/4 , Upper : 6 11/16. Variation sketches of purflings.
10240 (6)	Viola template (Card) – good condition	440mm x 140mm	Half body with neck and finger board nick. Annotations: many numeric values related to size.
			
10241 (7)	Viola template (Card) – good condition	420mm x 140mm	Half body with finger board nick. Annotation: “My 2nd Viola”

10242 (8)	Violin template (Card) – good condition	390mm x 120mm	Half body with neck. Annotation: “Old French 1800 Moclessier u Paris”
10243 (9)	Stradivarius (Vuillaume) violin template (Thin card) – good condition – small tear.	380mm x 120mm	Half body with neck and finger board nick. Annotations: Lower: 8 1/4; Upper : 6 11/16; “Outline of my own 1947 – not quite correct”;
10244 (10)	Guarnerius violin template (Paper) – fair condition	350mm x 200mm	Full body outline – ragged edges and tears. Annotations: Section lines; “Guarnerius 1734 - 1742”; “Earliest 1726”; “Bartolemo Guarneri”; “ Josheph Guarnerius del gesu fecit Cremona”; “Made 250 violins”
			
10245 (11)	Stradivarius Tenor (Viola?) template (Paper) – fair condition	470mm x 230mm	Half body. Annotations: Mr Brights Stradivarius Tenor”; Various measurements of rib depth and scroll length
10246 (12)	Violin template (card) – good condition	350mm x 110mm	Half body (belly). Annotations: Many outline measurements – Upper: 6 11/16; Middle: 4 5/16; Lower: 8 1/4; F-hole marked; Belly thickness outlined.



10247 (13)	Amati violin template (Paper) – fair condition.	370mm x 120mm	Half body with neck. Made from old newspaper – “Country Life Supplement” Annotations: “A&H Amati”; Lower: 8 1/4 ; Upper: 6 1/2 – 3/16
10248 (14)	Moclessier of Paris violin template (Card) – good condition	410mm x 110mm	Half body with neck. Annotations: “Old French 1800”; “Moclessier u Paris”
10249 (15)	Violin template (Paper) – fair condition,	400mm x 130mm	Half body with neck. Annotations: Lower: 8 1/8; Upper: 6 1/2 1/8
10250 (16)	Violin template (Paper) – very poor condition – two pieces	370mm x 140mm	Half body. Annotations: “Joseph”; Some very faint names and sizes on reverse.
10251 (17)	Violin template (Paper) – fair condition	350mm x 110mm	Half body shape. Annotations: Lower: 6 1/2 ; Upper: 8 1/4 ; “Roceu Joseph”
10252 (18)	Violin template (Card) – fair condition	350mm x 110mm	Half body shape. Tail piece and finger board nicks. Not annotations
10253 (19)	Violin template (Paper) – poor condition	390mm x 120mm	Half body shape with neck. Tail piece nick. Annotations: “Wilhelg Joseph”
10254 (20)	Violin template (Card) – poor condition	400mm x 140mm	Half body outline. Annotations: “Hudsom 1931, made 1903”; Lower: 8 1/4; Upper: 6 11/16;
10255 (21)	Violin template (Paper) – fair	410mm x 130mm	Half body outline.

	condition		Annotations: "made 1903"; "Sisod"; "Mr Hudson 1931"
10256 (22)	Violin template (Paper) – poor condition	410mm x 160mm	Half body outline. Very faint markings and annotations. Annotations: Lower:8; Upper 6 1/2; "Willoe Joseph"
10257 (23)	Viola template (Card) – fair condition	450mm x 140mm	Half body shape. Annotations: Upper: 4; Lower:5 ; "8" overall"; 10" overall"
10258 (24)	Amati Violin template (Paper) – fair condition	410mm x 150mm	Half body outline. Annotations: "A&H Amati"; Lower: 8 1/4; Upper: 6 1/2 3/16
10259 (25)	Viola template – fair condition	430mm x 130mm	Half body outline. Annotations: "England Viola"; Lower: 9"; Upper: 7 1/2; Middle: 5; "Joseph Guar"
10260 (26)	'Cello template (Paper) plus various fragments (3) – poor condition – four parts (a), (b) (c) and (d)	880mm x 310mm	Half body outline plus two "f" hole outlines and description. Annotations: "Enrice Ceruti Belly"; "7/32 to 1/4; "Ceruti Cello Belly"; Upper: 9 1/2 ; Middle: 7 1/2; Lower: 13 5/8
10261 (27)	Back section of Cello (Paper) – fair condition	810mm x 250mm	Section outline with annotations. Annotations: " Section of back of Millingwald 'Cello"; various other measurements and instructions
10262 (28)	Violin template (Paper) – poor condition	400mm x 230mm	Full body outline with neck. Very dirty. Annotations: " 14 Testose"
10263 (29)	Amati violin template (Card) – fair condition	410mm x 140mm	Half body outline. Annotations: "A&H Amati"; Lower: 8 1/4 ; Upper: 6 1/2 3/16
10264 (30)	Fragment (Card)	180mm x 80mm	Shaped card with annotations. Annotations: "42 stop"; " 1/4" over 41 3/4"; "centre of stop"; "re 21 1/2 from button..."

